

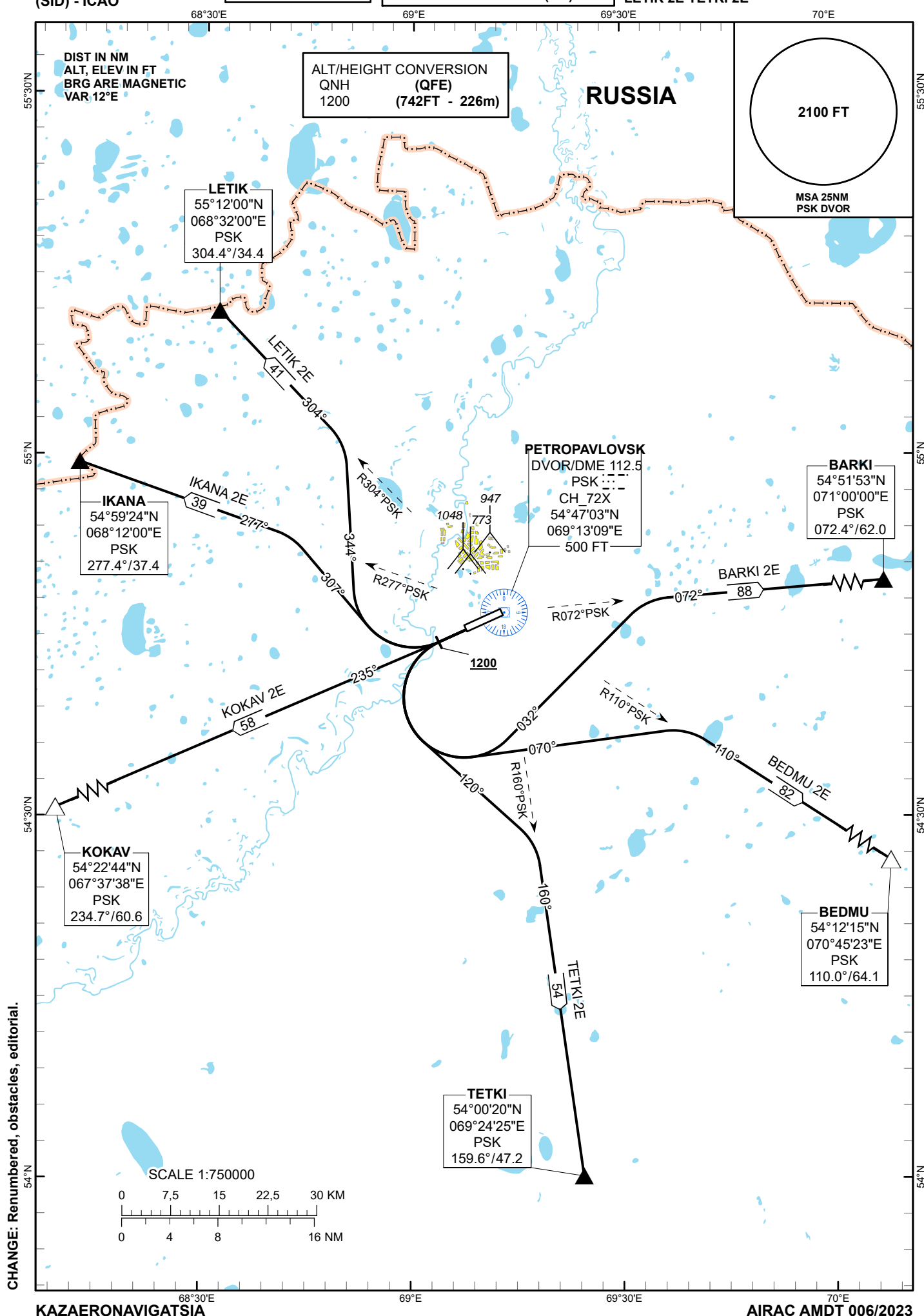
STANDARD DEPARTURE
CHART - INSTRUMENT
(SID) - ICAO

TRANSITION ALTITUDE
10000 FT

PETROPAVLOVSK TOWER 123.7
PETROPAVLOVSK ATIS (EN) 127.4
PETROPAVLOVSK ATIS (RU) 118.3

BARKI 2E BEDMU 2E
IKANA 2E KOKAV 2E
LETIK 2E TETKI 2E

PETROPAVLOVSK
RWY 23



**STANDARD DEPARTURE ROUTES – INSTRUMENT (SID)
PETROPAVLOVSK RWY 23**

BARKI 2E

After take-off climb straight ahead to 1200 FT, turn LEFT on track 032° until intercept R072°PSK, proceed on track 072° to BARKI (N545153 E0710000).

BEDMU 2E

After take-off climb straight ahead to 1200 FT, turn LEFT on track 070° until intercept R110°PSK, proceed on track 110° to BEDMU (N541215 E0704523).

TETKI 2E

After take-off climb straight ahead to 1200 FT, turn LEFT on track 120° until intercept R160°PSK, proceed on track 160° to TETKI (N540020 E0692425).

KOKAV 2E

After take-off climb straight ahead to 1200 FT, turn RIGHT on track 235°, proceed to KOKAV (N542244 E0673738).

IKANA 2E

After take-off climb straight ahead to 1200 FT, turn RIGHT on track 307° until intercept R277°PSK, proceed on track 277° to IKANA (N545924 E0681200).

LETIK 2E

After take-off climb straight ahead to 1200 FT, turn RIGHT on track 344° until intercept R304°PSK, proceed on track 304° to LETIK (N551200 E0683200).